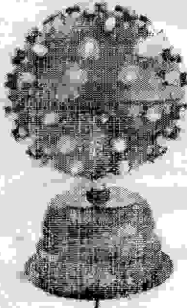


# LED bid magic light



## User Guide

## UNPACKING INSTRUCTION

### Unpacking:

Thanks you for purchasing this product. Please read user guide for safety and operations information before using the product. Keep this manual for future reference. Please check the attachments listed on the page after opening carton box. In the event of carton damage or attachments missing in transit, please contact your dealer or our after sales service department.

Attachment: 1. Light: 1 pcs 2. User Guide: 1 pcs 3. Power cable: 1 pcs

### NOTICE

- 2, Do not turn on and off the unit frequently.
- 3, Makes sure the power supply connects ground before using.
- 4, This unit is applicable for only indoor use and must be avoided water, moisture and shade damage. Working temperature should be 18~30°C.
- 5, Do not use it successively over 4 hours, otherwise it will shorten its lifetime.
- 6, Use cleaning tissue to remove dust on the external lenses periodically to optimize light output.
- 7, Do not remove or break the warranty label, otherwise it void warranty.
- 8, Always replace with the exact same type fuse, replacement with anything other than the specified fuse can cause fire or electric shock and damage your unit, and will overstep our manufacturer's warranty.

### TECHNICAL SPECIFICATION

- 1, Voltage: AC220V, 50HZ/60HZ,
- 2, Power: 30W
- 3, Working Modes: Sound Active, Auto, Master-Slave

### Maintenance

Regular maintenance of product, use alcohol cotton swabs defatted cleaning lenses, to optimize the efficacy output. Note don't use wetted cloth or other chemical solvents wipe lens. Depending on operating environment and use frequency to clean the light, suggest every 15 days clean again.

### Operating Instruction

Thanks for having chosen our company's products again, please read this user manual carefully before installing the device. Understand the product function and strictly according to procedures, in order to avoid incorrect operation causing by the human being or damaged the light.

LED light adopted advanced technology and design process, high intensity aluminium cover, with modern streamline design.

### Warning

Please don't use eyes to see light directly.

In any installation and maintenance work, please confirm the power already cut off.

### LED Light Warranty Card

This product adopts high brightness transistors. Users in the normal use of this product warranty for one year, lifelong maintenance, Man-made and natural disasters not warranty scope, collect maintenance accessories expenses, when the product warranty please cut allied with product factory sent back together.

Item name:	Buy date:	Invoice NO.:			
Warranty period: 200	year	month	to	year	month
User name:	Detailed Address:				
Company:					Tell: